



S. P. Sampathy's Siva Sivani Group ®  
S. P. Sampathy's Siva Sivani Educational Society (2906/97)  
**SIVA SIVANI DEGREE COLLEGE**  
(Affiliated to Osmania University)

## **7.1.3 CLEAN AND GREEN CAMPUS INITIATIVES**

- CIRCULARS
- ACTIVITIES



S. P. Sampathy's Siva Sivani Group®  
S. P. Sampathy's Siva Sivani Educational Society (2906/97)

## SIVA SIVANI DEGREE COLLEGE

(Affiliated to Osmania University)

### LIST OF ACTIVITIES

SNO	Activities	Objective	Persons Involved
1.	Green Day	To promote Eco-friendly activities and bring awareness among students regarding the greenery prominence.	Students and Faculty Coordinators.
2.	Sapling for the success	To promote Eco-friendly activities and bring awareness among students regarding the greenery prominence.	Students and Faculty Coordinators.
3.	Each One-Plant One	To promote Eco-friendly activities and bring awareness among students regarding the greenery prominence.	Students and Faculty Coordinators.
4.	Tree Plantation Drive	To promote Eco-friendly activities and bring awareness among students regarding the greenery prominence.	Students and Faculty Coordinators.
5.	Ban On Plastic	To promote Eco-friendly activities and bring awareness among students regarding the greenery prominence.	Students and Faculty Coordinators.
6.	Go Green – Save Earth	To promote Eco-friendly activities and bring awareness among students regarding the greenery prominence.	Students and Faculty Coordinators.
7.	Plantation Drive	To promote Eco-friendly activities and bring awareness among students regarding the greenery prominence.	Students and Faculty Coordinators.
8.	Sow for Tomorrow	To promote Eco-friendly activities and bring awareness among students regarding the greenery prominence.	Students and Faculty Coordinators.
9.	Disposal of waste	To promote Eco-friendly activities and bring awareness among students regarding the greenery prominence.	Students and Faculty Coordinators.



NH – 44, Kompally, Secunderabad – 500 100, Telangana, INDIA  
Mobile: - +91-9247048112. Website: ssdc.ac.in

*Manoj*  
**PRINCIPAL**

Siva Sivani Degree College  
Kompally, Medchal-Malkajgiri(Dt)-500100



S. P. Sampathy's Siva Sivani Group ®  
S. P. Sampathy's Siva Sivani Educational Society (2906/97)  
**SIVA SIVANI DEGREE COLLEGE**  
(Affiliated to Osmania University)

# CIRCULAR AND REPORT OF ACTIVITIES



NH - 44, Kompally, Secunderabad - 500 100, Telangana, INDIA  
Mobile: - +91-9247048112 Website: [ssdc.ac.in](http://ssdc.ac.in)

*Mamata*  
**PRINCIPAL**  
Siva Sivani Degree College  
Kompally, Medchal-Khalakuri (Dt)-500100



S. P. Sampathy's Siva Sivani Group  
S. P. Sampathy's Siva Sivani Educational Society (2906/97)  
**SIVA SIVANI DEGREE COLLEGE**  
(Affiliated to Osmania University)

**CIRCULAR**

Date: 04-12-2023

This is to hereby inform to all the staff & students that we are excited to announce the upcoming celebration of **Green Day** on 08<sup>th</sup> Dec'2023 at our college premises. Green Day is a special occasion dedicated to promoting environmental awareness, sustainability, and eco-friendly practices. This event provides us with an opportunity to unite as a community and make positive contributions towards a greener and more sustainable future. So dear staff and students all have to participate in this event.



*Mamatha*

PRINCIPAL

PRINCIPAL

Siva Sivani Degree College  
Kompally, Medchal-Malkajgiri(Dt)-500100

**Copy to:**

1. Vice Principal
2. HOD'S
3. Staff-in-charge



NH - 44, Kompally, Secunderabad - 500 100, Telangana, INDIA  
Mobile: +91-9247048112 Website: ssdc.ac.in

*Mamatha*  
PRINCIPAL  
Siva Sivani Degree College  
Kompally, Medchal-Malkajgiri(Dt)-500100



S. P. Sampathy's Siva Sivani Group ®  
S. P. Sampathy's Siva Sivani Educational Society (2906/97)  
**SIVA SIVANI DEGREE COLLEGE**  
(Affiliated to Osmania University)

**GREEN DAY -08<sup>th</sup> Dec'2023.**

Siva Sivani Degree College celebrated green day on 08/12/2023, Friday. Go green is a step to conserve our nature and lead eco-friendly life, which will help us as well as nature to sustain the natural resources for future generations. A clean and green environment always calms our minds and helps us to reduce stress.

All the students and faculty members wholeheartedly took part in the event with great zeal and enthusiasm through an initiative of planting various tree samplings in and around the college.

The main motto of this event is to plant trees for a cleaner, greener and sustainable environment to live in & to promote human values regarding concern to the surrounding environment.

This helped to create a positive impact on students' thinking and attitude towards the environment.

This event is a positive step towards achieving a healthy environment and to reconnect humans to nature & the environment.

All were happy and experience proud after the tree plantation event was finished, because it really feels great to do positive for the nature.



*Kamath*  
**PRINCIPAL**

Siva Sivani Degree College  
Kompally, Medchal-Malkajgiri(Dt)-500100

NH - 44, Kompally, Secunderabad - 500 100, Telangana, INDIA  
Mobile: - +91-9247048112 Website: ssdc.ac.in



S. P. Sampathy's Siva Sivani Group®  
S. P. Sampathy's Siva Sivani Educational Society (2906/97)  
**SIVA SIVANI DEGREE COLLEGE**  
(Affiliated to Osmania University)



NH - 44, Kompally, Secunderabad - 500 100, Telangana, INDIA  
Mobile: - +91-9247048112. Website: [ssdc.ac.in](http://ssdc.ac.in)

*Mamellap*  
**PRINCIPAL**

Siva Sivani Degree College  
Kompally, Medchal-Malkajgiri (Dt)-500100



S. P. Sampathy's Siva Sivani Group®  
S. P. Sampathy's Siva Sivani Educational Society (2906/97)

**SIVA SIVANI DEGREE COLLEGE**

(Affiliated to Osmania University)

**CIRCULAR**

**Date: 09-10-2023**

This is to hereby inform to all the staff & students that we are delighted to announce an initiative 'Sapling for the success' aimed at fostering growth, sustainability, and success within our college community on 13<sup>th</sup> Oct' 2023. As part of this endeavor, we will be distributing saplings to all members of our college. The distribution of saplings is intended to symbolize our collective commitment to growth, both as individuals and as a community. These saplings represent the potential for positive change and the nurturing environment we aim to cultivate within our college.



*Mamathap*

**PRINCIPAL**

**PRINCIPAL**

**Siva Sivani Degree College**  
Kompally, Medchal-Malkajgiri(Dt)-500100

**Copy to:**

1. Vice Principal
2. HOD'S
3. Staff-in-charge



NH - 44, Kompally, Secunderabad - 500 100, Telangana, INDIA  
Mobile: - +91-9247048112 Website: [ssdc.ac.in](http://ssdc.ac.in)

*Mamathap*

**PRINCIPAL**

**Siva Sivani Degree College**  
Kompally, Medchal-Malkajgiri(Dt)-500100



S. P. Sampathy's Siva Sivani Group ®  
S. P. Sampathy's Siva Sivani Educational Society (2906/97)  
**SIVA SIVANI DEGREE COLLEGE**  
(Affiliated to Osmania University)

**SAPLING FOR THE SUCCESS: (13<sup>th</sup> Oct'2023)**

World Environment Day was celebrated in the college on 13<sup>th</sup> Oct'2023. The program was organised on the theme "Only One Earth". The program started with a brief Awareness meeting to spread the importance of conserving planet Earth, which is our only true home.

The Principal of the college, P. Mamatha madam spoke about the significance of tree plantation for preserving biodiversity and climate control beside providing the basic needs of life on Earth.



*Mamatha*  
**PRINCIPAL**

NH - 44, Kompally, Secunderabad - 500 100, Telangana, INDIA  
Mobile: - +91-9247048112. Website: [ssdc.ac.in](http://ssdc.ac.in)  
Siva Sivani Degree College  
Kompally, Medchal-Malkajgiri (Dt)-500100





S. P. Sampathy's Siva Sivani Group  
S. P. Sampathy's Siva Sivani Educational Society (2906/97)

# SIVA SIVANI DEGREE COLLEGE

(Affiliated to Osmania University)

## CIRCULAR

Date: 11-08-2023

This is to here by inform you that, we are excited to launch the "Each One Plant One" initiative, an eco-friendly campaign aimed at promoting environmental consciousness and sustainability within our college community on 18<sup>th</sup> Aug'2023. Each member of our college community, including students, faculty, and staff, is encouraged to plant at least one tree, contributing to the greening of our campus and fostering a sense of collective responsibility for our environment.



*Mamatha*  
PRINCIPAL  
Siva Sivani Degree College  
Kompally, Medchal-Malkajgiri (Dt)-500100

### Copy to:

1. Vice Principal
2. HOD'S
3. Staff-in-charge



NH - 44, Kompally, Secunderabad - 500 100, Telangana, INDIA  
Mobile: - +91-9247048112 Website: sstdc.ac.in

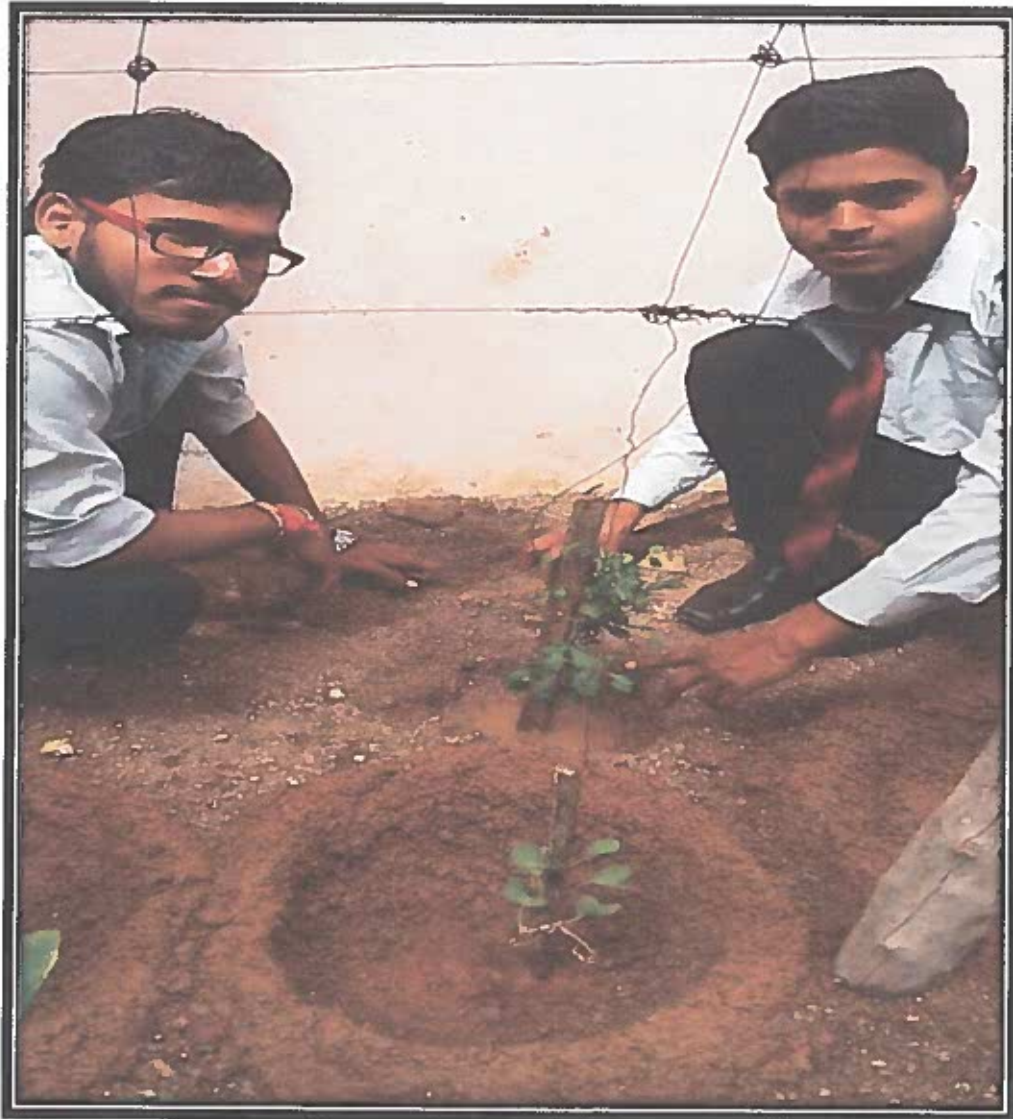
*Mamatha*  
PRINCIPAL  
Siva Sivani Degree College  
Kompally, Medchal-Malkajgiri (Dt)-500100



S. P. Sampathy's Siva Sivani Group®  
S. P. Sampathy's Siva Sivani Educational Society (2906/97)  
**SIVA SIVANI DEGREE COLLEGE**  
(Affiliated to Osmania University)

**EACH ONE-PLANT ONE : (18<sup>th</sup> Aug'2023)**

Each one plant one program was conducted on 18<sup>th</sup> Aug'2023. Students actively participated in Each one-plant one tree program by planting trees in college and near the hostels. This helped to create a positive impact on students' thinking and attitude towards the environment.



NH - 44, Kompally, Secunderabad - 500 100. Telangana, INDIA  
Mobile: - +91-9247048112. Website: [ssdc.ac.in](http://ssdc.ac.in)

*Mamalees*  
**PRINCIPAL**

**Siva Sivani Degree College**  
Kompally, Medchal-Malkajgiri(Dt)-500100



S. P. Sampathy's Siva Sivani Group  
S. P. Sampathy's Siva Sivani Educational Society (2906/97)  
**SIVA SIVANI DEGREE COLLEGE**  
(Affiliated to Osmania University)

**CIRCULAR**

Date: 02/02/2023

All the students and staff hereby inform that the Department of science in collaboration with IQAC has organized "Tree Plantation" at our college on date 16/02/2023 at 11.30 am. So dear staff and students all have participate in the event.



*Mamathap*

PRINCIPAL  
Siva Sivani Degree College  
Kompally, Medchal-Khalakuri (Dt)-500100

**Copy to:**

1. Vice Chairman
2. Vice Principal
3. HOD'S



NH - 44, Kompally, Secunderabad - 500 100, Telangana, INDIA  
Mobile: - +91-9247048112 Website: ssc.ac.in

*Mamathap*  
PRINCIPAL  
Siva Sivani Degree College  
Kompally, Medchal-Khalakuri (Dt)-500100

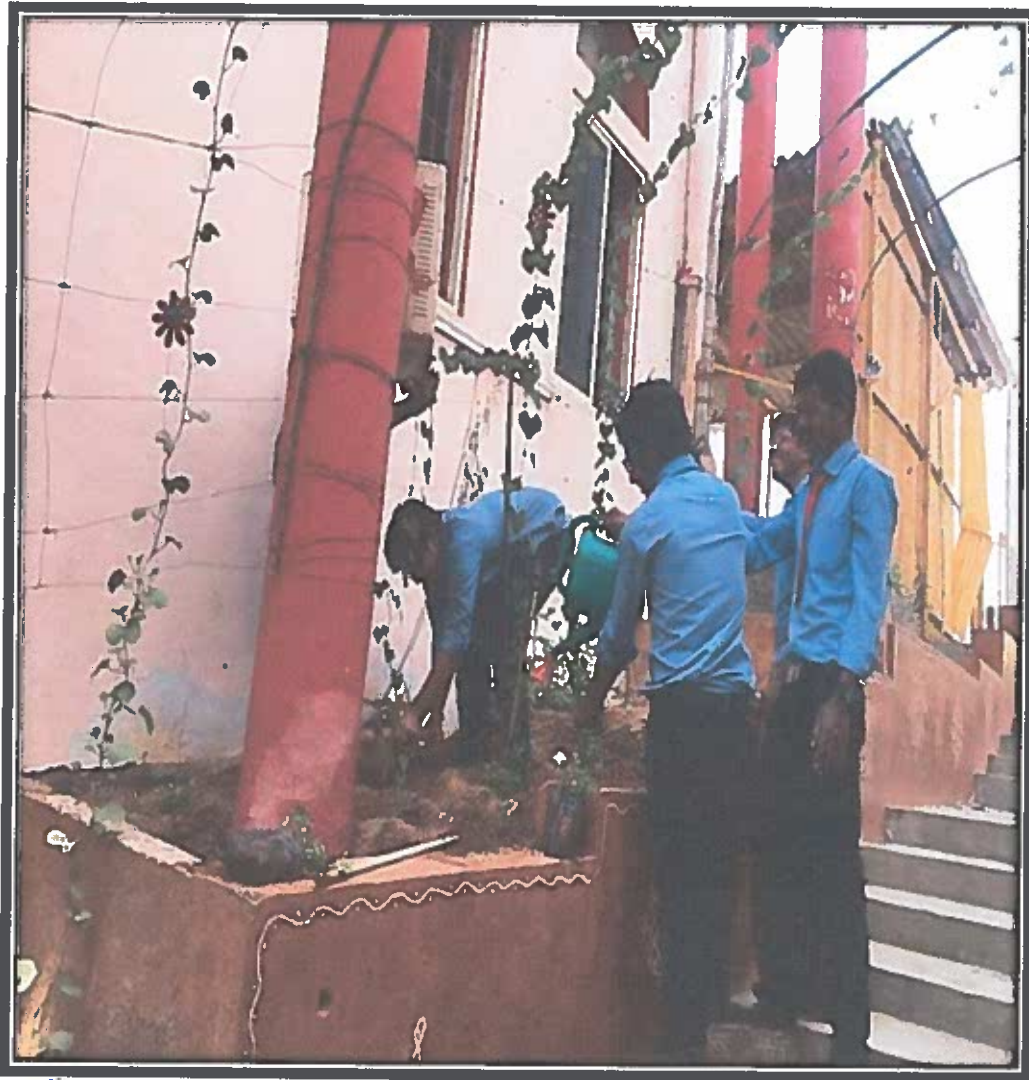


S. P. Sampathy's Siva Sivani Group ®  
S. P. Sampathy's Siva Sivani Educational Society (2906/97)  
**SIVA SIVANI DEGREE COLLEGE**  
(Affiliated to Osmania University)

**TREE PLANTATION DRIVE: (16<sup>th</sup> Feb '2023)**

A "Tree Plantation Drive was organized on 16<sup>th</sup> Feb '2023.

In this drive, students are motivated to take care of the saplings so that they grow into healthy trees. Free saplings were requested from the Forest department. Students are distributed free saplings which were planted within the premises of the college. The students were motivated and advised to take care of the saplings planted by them. The students also took the Oath: "I will plant a tree sapling and take care of the sapling such that it grows into a mature tree"



*Maneetop*  
**PRINCIPAL**

NH - 44, Kompally, Secunderabad - 500 100. Telangana, INDIA  
Mobile: - +91-9247048112. Website: [ssdc.ac.in](http://ssdc.ac.in)

Siva Sivani Degree College  
Kompally, Medchal-Malkajgiri (DI)-500100



S. P. Sampathy's Siva Sivani Group®  
S. P. Sampathy's Siva Sivani Educational Society (2906/97)

**SIVA SIVANI DEGREE COLLEGE**

(Affiliated to Osmania University)

**CIRCULAR**

**Date: 24/06/2022**

**BAN ON PLASTIC**

All the Staff members & students are hereby informed to take an initiative towards 'Ban on Plastic' to protect the environment from threat of plastic usage. In this regard the below said observations must be followed on 02<sup>nd</sup> July'2022:

1. Ban on single-use plastics.
2. The use of plastic products must be discouraged & Practice using cloth paper jute bags is encouraged.
3. Non-bio-degradable plastic items are not allowed to the institution.
4. Family members must be made aware of the harmful effects of plastics to make their households 'plastic free.

**"REPLACE PLASTICS WITH BIO DEGRADABLE MATERIALS"**

**Copy to:**

1. Vice Principal
2. HOD'S
3. Staff-in-charge



*Manathap*  
PRINCIPAL

**PRINCIPAL**  
**Siva Sivani Degree College**  
Kompally, Medchal-Malkajgiri(Dt)-500100



NH - 44, Kompally, Secunderabad - 500 100, Telangana, INDIA  
Mobile: - +91-9247048112. Website: ssdc.ac.in

*Manathap*  
**PRINCIPAL**  
**Siva Sivani Degree College**  
Kompally, Medchal-Malkajgiri(Dt)-500100



### BAN ON PLASTIC: (02<sup>nd</sup> July'2022)

The use of plastic is not only harmful to our environment but our human body as well. Keeping in this mind, the college has taken an initiative to ban the use of plastic in the college campus on 02<sup>nd</sup> July'2022.

The students and staff are encouraged to bring steel/copper water bottles and boxes instead of using plastic ones.

We aim to measurably reduce plastic waste and pollution in our campus.





S. P. Sampathy's Siva Sivani Group  
S. P. Sampathy's Siva Sivani Educational Society (2906/97)  
**SIVA SIVANI DEGREE COLLEGE**  
(Affiliated to Osmania University)

**CIRCULAR**

Date:20-08-2022

With the aim of making a positive impact on our environment, we would like to organize "Go Green, Save Earth" event on 25<sup>th</sup> Aug`2022, a collective effort to promote sustainability, environmental consciousness, and responsible living within our college community. Therefore, all the students & staff are informed to adopt eco-friendly practices and contribute to the preservation of our planet.



*Mamathap*

PRINCIPAL

PRINCIPAL

Siva Sivani Degree College  
Kompally, Medchal-Malkajgiri(Dt)-500100

Copy to:

1. Vice Principal
2. HOD'S
3. Staff-in-charge



NH - 44, Kompally, Secunderabad - 500 100, Telangana, INDIA  
Mobile: - +91-9247048112 Website: [ssdc.ac.in](http://ssdc.ac.in)

*Mamathap*  
PRINCIPAL  
Siva Sivani Degree College  
Kompally, Medchal-Malkajgiri(Dt)-500100



**GO GREEN SAVE EARTH: (25<sup>th</sup> Aug'2022)**

"Go Green, Save Earth" serves as a powerful reminder that our individual and collective actions have a profound impact on the health of the planet. By adopting sustainable practices and fostering a sense of environmental responsibility, we contribute to the preservation of Earth's natural beauty and resources for generations to come.



NH - 44, Kompally, Secunderabad - 500 100, Telangana, INDIA  
Mobile: - +91-9247048112. Website: [ssdc.ac.in](http://ssdc.ac.in)

*Mamathof*  
**PRINCIPAL**  
Siva Sivani Degree College  
Kompally, Medchal-Malkajgiri(Dt)-500100





S. P. Sampathy's Siva Sivani Group  
S. P. Sampathy's Siva Sivani Educational Society (2906/97)  
**SIVA SIVANI DEGREE COLLEGE**  
(Affiliated to Osmania University)

**CIRCULAR**

Date:28-08-2021

This is to inform that we are going to conduct a **Plantation Drive on 04<sup>th</sup> Sept'2021**, a green initiative aimed at enhancing the beauty of our campus, contributing to environmental sustainability, and fostering a sense of responsibility towards nature. As advocates for a greener future, we invite every member of our college community to participate in this meaningful and eco-friendly endeavor.



*Manalathap*

PRINCIPAL

PRINCIPAL

Siva Sivani Degree College  
Kompally, Medchal-Malkajgiri(DI)-500100

Copy to:

1. Vice Principal
2. HOD'S
3. Staff-in-charge



NH - 44, Kompally, Secunderabad - 500 100, Telangana, INDIA  
Mobile: +91-9247048112 Website: [ssdc.ac.in](http://ssdc.ac.in)

*Manalathap*  
PRINCIPAL  
Siva Sivani Degree College  
Kompally, Medchal-Malkajgiri(DI)-500100



S. P. Sampathy's Siva Sivani Group ®  
S. P. Sampathy's Siva Sivani Educational Society (2906/97)  
**SIVA SIVANI DEGREE COLLEGE**  
(Affiliated to Osmania University)

**PLANTATION DRIVE : (04<sup>th</sup> Sept'2021)**

Plantation drive engages people around the world in environmental activities, from tree planting and clean-up campaigns to discussions on pressing issues like climate change, pollution and biodiversity.

It is a day that reminds everyone on the planet to get involved in environment friendly activities. The Plantation drive was celebrated by tree planting in the college campus.



H - 44, Kompally, Secunderabad - 500 100, Telangana, INDIA  
Mobile: - +91-9247048112. Website: [ssdc.ac.in](http://ssdc.ac.in)

*Uamethop*  
**PRINCIPAL**  
Siva Sivani Degree College  
Kompally, Medchal-Malkajgiri (Dt)-500 100



S. P. Sampathy's Siva Sivani Group  
S. P. Sampathy's Siva Sivani Educational Society (2906/97)  
**SIVA SIVANI DEGREE COLLEGE**  
(Affiliated to Osmania University)

**CIRCULAR**

**Date:12-08-2019**

This is to inform that we are excited to launch our "Sow for Tomorrow" initiative, a green campaign aimed at promoting sustainability, fostering environmental consciousness, and beautifying our college campus on **28<sup>th</sup> Aug'2019**. The initiative encourages every member of our college to actively participate in planting seeds for a more sustainable and green future.



*Mamathap*

**PRINCIPAL**

**PRINCIPAL**

**Siva Sivani Degree College**  
Kompally, Medchal-Malkajgiri(Dt)-500100

**Copy to:**

1. Vice Principal
2. HOD'S
3. Staff-in-charge



NH - 44, Kompally, Secunderabad - 500 100, Telangana, INDIA  
Mobile: - +91-9247048112 Website: [ssdc.ac.in](http://ssdc.ac.in)

*Mamathap*  
**PRINCIPAL**

**Siva Sivani Degree College**  
Kompally, Medchal-Malkajgiri(Dt)-500100



S. P. Sampathy's Siva Sivani Group ®  
S. P. Sampathy's Siva Sivani Educational Society (2906/97)  
**SIVA SIVANI DEGREE COLLEGE**  
(Affiliated to Osmania University)

**SOW FOR TOMORROW: (28<sup>th</sup> Aug 2019)**

Sow for tomorrow is a green plantation which is dynamic and purposeful landscape that goes beyond traditional forestry. It encapsulates the principles of sustainability, biodiversity conservation, and community engagement, serving as a model for environmentally conscious land management and a source of inspiration for a greener, healthier future.



NH - 44, Kompally, Secunderabad - 500 100, Telangana, INDIA  
Mobile: +91-9247048112 Website: [ssdc.ac.in](http://ssdc.ac.in)

*Mamella*  
**PRINCIPAL**  
Siva Sivani Degree College  
Kompally, Medchal-Malkajgiri (Dt)-500100



S. P. Sampathy's Siva Sivani Group ®  
S. P. Sampathy's Siva Sivani Educational Society (2906/97)

# SIVA SIVANI DEGREE COLLEGE

(Affiliated to Osmania University)

## CIRCULAR

Date:08-03-2018

### DISPOSAL OF WASTE- GLOBAL RECYCLING DAY

This is to inform all the staff and students are directed to dispose the wastes in the designated waste bins installed for the purpose.

Reduce the waste generation at source itself and it is encouraged to reuse, repair, and recycle the waste in an environmentally sound and cost-effective manner on **16<sup>th</sup> Mar'2018**.

All should strictly adhere to this and cooperate to have clean and green campus.



*Mamathap*  
PRINCIPAL

PRINCIPAL  
Siva Sivani Degree College  
Kompally, Medchal-Maikajgiri(Dt)-500100

#### Copy to:

1. Vice Chairman
2. Vice Principal
3. HOD'S
4. Staff-in-charge



*Mamathap*  
PRINCIPAL

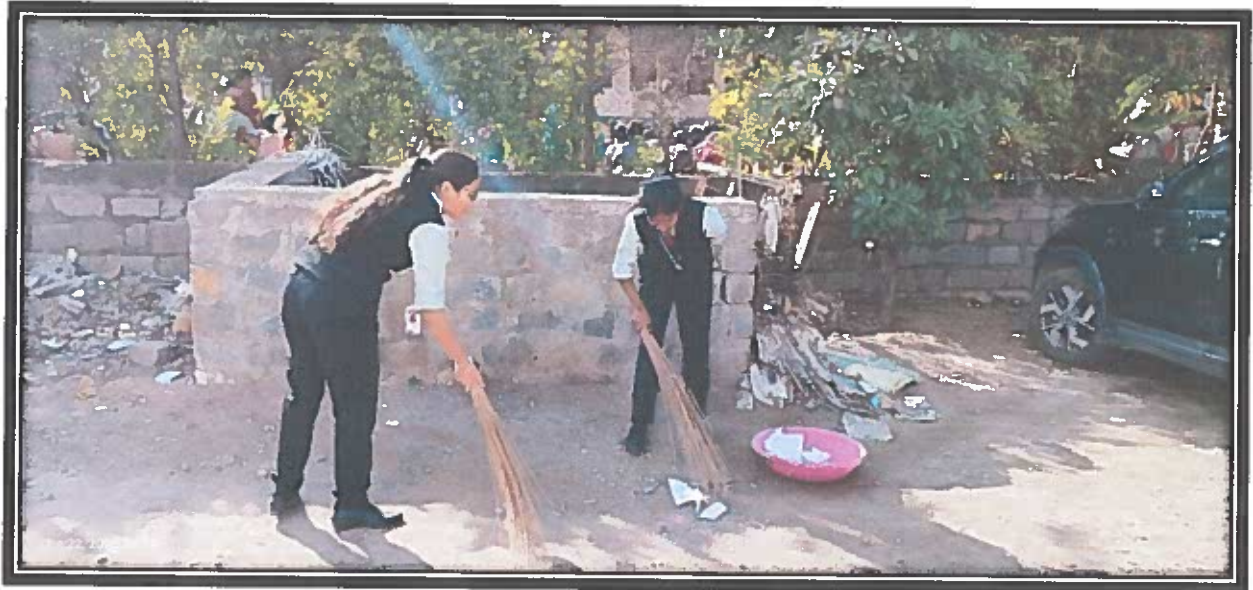
Siva Sivani Degree College  
Kompally, Medchal-Maikajgiri(Dt)-500100



S. P. Sampathy's Siva Sivani Group<sup>®</sup>  
S. P. Sampathy's Siva Sivani Educational Society (2906/97)  
**SIVA SIVANI DEGREE COLLEGE**  
(Affiliated to Osmania University)

**DISPOSAL OF WASTE- GLOBAL RECYCLING DAY: (16<sup>th</sup> March '2018)**

Disposal of waste refers to the proper and responsible management of waste materials to minimize their environmental impact. Waste disposal involves the collection, transportation, processing, and final disposal or recycling of waste. The main objective of the disposal of waste was to address the issues of hygiene, public sanitation conditions, and to create awareness towards cleanliness inside the college campus. We encourage students to compost their food waste and use it to fertilize campus gardens. By reducing waste and recycling the same in college campuses, we can decrease the carbon footprint, save money, create educational opportunities, engage the community and comply with regulations.





S. P. Sampathy's Siva Sivani Group®  
S. P. Sampathy's Siva Sivani Educational Society (2906/97)  
**SIVA SIVANI DEGREE COLLEGE**  
(Affiliated to Osmania University)

## 7.1.3 CLEAN AND GREEN FACILITIES



NH - 44, Kompally, Secunderabad - 500 100, Telangana, INDIA  
Mobile: - +91-9247048112 Website: [ssdc.ac.in](http://ssdc.ac.in)

*Namathop*

**PRINCIPAL**  
Siva Sivani Degree College  
Kompally, Medchal-Malkajgiri (U4-300 ...)



S. P. Sampathy's Siva Sivani Group ®  
S. P. Sampathy's Siva Sivani Educational Society (2906/97)

## SIVA SIVANI DEGREE COLLEGE

(Affiliated to Osmania University)

### LIST OF FACILITIES

S.NO	NAME OF THE FACILITY
1.	SOLAR POWER PLANT
2.	PEDESTRIAN FRIENDLY WALK WAYS
3.	PLAY GROUND
4.	E-WASTE MANAGEMENT
5.	DRINKING WATER PURIFIERS AND STORAGE TANK
6.	RAIN WATER HARVESTING PIT



NH - 44, Kompally, Secunderabad - 500 100, Telangana, INDIA  
Mobile: - +91-9247048112 Website: ssdc.ac.in

*Mamallap*

PRINCIPAL  
Siva Sivani Degree College  
Kompally, Madhwal, Secunderabad

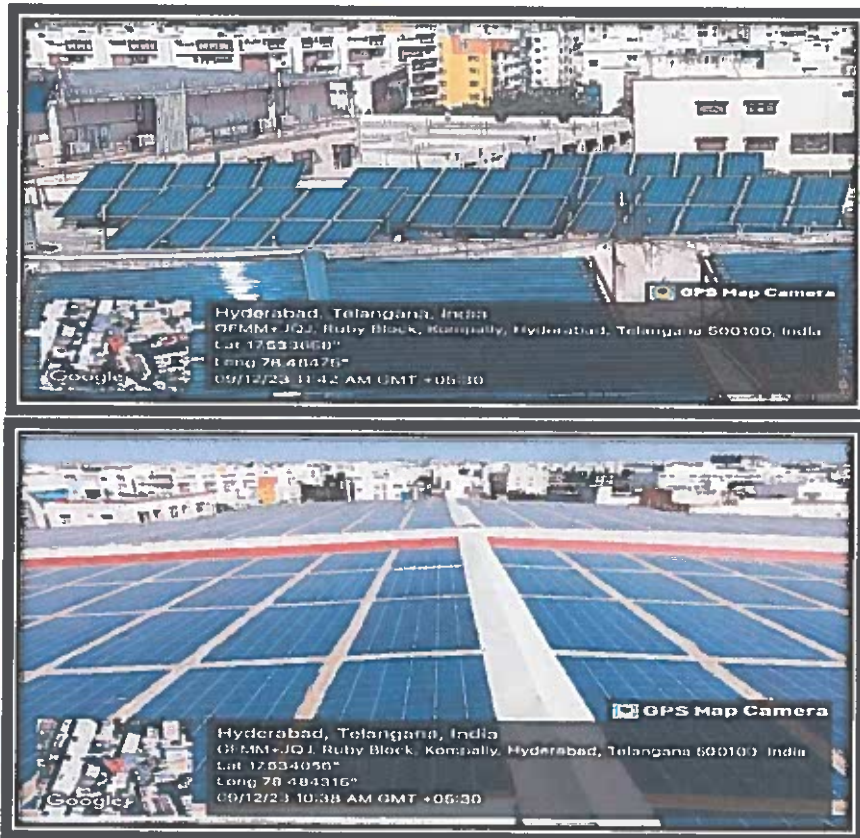




S. P. Sampathy's Siva Sivani Group<sup>®</sup>  
S. P. Sampathy's Siva Sivani Educational Society (2906/97)  
**SIVA SIVANI DEGREE COLLEGE**  
(Affiliated to Osmania University)

**SOLAR POWER PLANT:**

Siva Sivani degree college uses solar technologies to diversify their energy sources, improve efficiency, and to meet most of the power demand by the institute. Let's integrate sustainable technology into our college environment by adding solar panels to the campus. The college has embraced eco-friendly practices, and solar panels have been strategically placed to harness renewable energy. The college rooftops are adorned with sleek solar panels, soaking up the abundant sunlight. To promote green energy and zero carbon emission, solar panels are installed in the campus at various locations with a voltage level of 230 and 96kW solar power panels are installed above the Degree college building. The total capacity is 96kW which provides supply to the entire power requirement towards our college building. The panels are neatly arranged in arrays, forming a modern and environmentally conscious addition to the campus architecture.



NH – 44, Kompally, Secunderabad – 500 100, Telangana, INDIA  
Mobile: - +91-92470-48112. Website: [ssdc.ac.in](http://ssdc.ac.in)

*Mamata*

**PRINCIPAL**  
Siva Sivani Degree College  
Kompally, Medchal-Malkajgiri (DQ)-500...



**SOUTHERN POWER DISTRIBUTION COMPANY OF T.S. LIMITED**  
Medchal Division, Vennelagadda, Secunderabad-67  
(Energy Saved is Energy Produced)

From  
Divisional Engineer Electl.,  
Operation Medchal, Vennelagadda,  
Jeedimetla (V), Secunderabad - 67.

To,  
M/s. S.P Sampathy's (Shiva Sivani,  
Educational Society (MCL3482)  
At Plot.No.38 & 39/P, Kompally (V)  
Qutubullapur (M), Medchal Dist.,

Lr. No.DEE/OP/MDCL/Techl. /F. Solar Power/D. No. 5620 /22-23, date 10/03/-2023.

Sir,

**Sub:** - Eley. - Operation division, Medchal - Installation of 96KW Capacity Rooftop Solar PV System for M/s. S.P Sampathy's (Shiva Sivani Educational Society (MCL3482) with a CMD of 120 KVA, at Plot.No.38 & 39/P, Kompally (V), Qutubullapur (M), Medchal Dist., in Kompally Section of Qutubullapur Sub - division in Operation division, Medchal of Medchal Circle - Agreement concluded - Reg.

**Ref:** - 1. Memo No.DEE/OP/MDCL/Techl. /F/SRT.No.81/22-23, Date. 17.01.2023.  
2. Your application No. NT9992324073, dated 12.01.2023.

\*\*\*\*\*

The HT Agreement Executed by you for Installation of 96KW Capacity Rooftop Solar PV System for M/s. S.P Sampathy's (Shiva Sivani Educational Society (MCL3482) with a CMD of 120 KVA, at Plot.No.38 & 39/P, Kompally (V), Qutubullapur (M), Medchal Dist., in Kompally Section of Qutubullapur Sub - division in Operation division, Medchal of Medchal Circle on this day of 10 March 2023 has been concluded in his office and forwarded for your record.

**Encl:** Agreement Copy.

  
Divisional Engineer Electl.,  
Operation Medchal, TSSPDCL.

Copy to: -

The Senior Accounts Officer /Medchal Circle. →

Enclosed original agreement for necessary action.

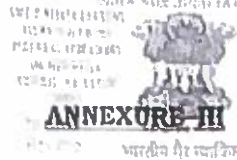
The Superintending Engineer/Operation/Medchal Circle. → For information please.

The Asst. Divisional Engineer/Operation/Qutubullapur.



  
**PRINCIPAL**  
Siva Sivani Degree College  
Kompally, Medchal-Malkajgiri(Dt)-500100

Phone No  
Sold followed to  
Collection  
For Free ID Proof  
Self



929201064  
0000200  
3016270 3016270  
3016270 05 2016

(on non-judicial stamp paper worth Rs.200/-)

Net Metering Connection Agreement

This Agreement executed and entered on this 28th (day) of February (month) 2022 (year), between M/s Ms. V. S. SALLESHAM which means their/ his/its /theirs, successors as FIRST PARTY herein after called as "Eligible Consumer" and the Southern Power Distribution Company of Telangana Limited, a DISCOM incorporated under the provisions of Companies Act 1956 (which means its authorized representatives assigns, executors and its successors) as SECOND PARTY, herein after called the "DISCOM".

President/Vice President

Whereas, the Eligible Consumer has applied to the DISCOM for approval of a Net Metering arrangement at Sy.No./D.No 35029P Street KOMPALLY (V) 94th (Ward) having electrical Service Connection No. MCI 3482 under TSERC (Net Metering Rooftop Solar PV Grid Interactive System) Regulation No. 06 of 2016, dated 16.11.2016, which is effective from the date of its notification in the official gazette i.e., 23.11.2016.

And whereas, DISCOM agrees to provide grid connectivity to the Eligible Consumer for injection of electricity generated from the Rooftop Solar PV System of capacity 96 kilowatts into the grid of DISCOM at 230 (Voltage level), as per conditions of this agreement.

Any modification/ amendment in the Regulation made shall be applicable and corresponding amendment(s) shall be effective to this agreement from time to time.

Both the parties hereby agree to as follows:

**1. Governing Provisions**

We hereby undertake to comply with all the requirements of the Electricity Act, 2003, the Rules and Regulations framed there under, provisions of the tariffs, applicable Charges and the General Terms and Conditions of Supply approved by the Telangana State Electricity Regulatory Commission herein after called as "Commission" from time to time and agree not to dispute the same.

President/Vice President

**2. Net metering facility**

- i) Eligible Consumer will generate solar power for self consumption and feed excess power into the grid of DISCOM.
- ii) In the premises of Eligible Consumer, a meter will be installed by DISCOM having the feature of recording both the import and export values, besides complying with other parameters notified in CEA metering regulations and TRANSCO/DISCOM procedures for arriving net energy for the billing period.



*(Signature)*  
Divisional Engineer (Elect)  
Operation, Medchal TSSPDCL  
Venelagadda, Jeedimetla (V), Sec'bad-55

*(Signature)*  
**PRINCIPAL**  
Siva Sivani Degree College  
Kompally, Medchal-Malkajgiri(DT)-500100

### 3. Safety

- 3.1 The Eligible Consumer shall be responsible for safe operation, maintenance and rectification of defects in system upto the interconnection point beyond which the responsibility of safe operation, maintenance and rectification of any defect in the system including the net meter shall rest with the DISCOM.
- 3.2 The Eligible Consumer shall be solely responsible for any accident to human being or animals (fatal / non-fatal / departmental / non-departmental) that may occur due to back feeding from the Rooftop Solar PV System when the grid supply is off. The DISCOM reserves the right to disconnect the consumer's installation at any time to prevent any accident or damage to men and material. The DISCOM shall not be responsible to pay any ex-gratia on account of fatal accidents or non-fatal accidents occurring on account of the Rooftop Solar PV System in the premises of the eligible consumer.
- 3.3 The Eligible Developer shall strictly adhere to the standards specified by CEA/MNRE and installations of electrical equipment must comply with Indian Electricity rules, 1956 and also to follow power quality measures as per International or Indian standards and/or other such measures provided in Clause 8 of TSERC (Net Metering Rooftop Solar PV Grid Interactive System) Regulation No. 06 of 2016 and any modification/ amendment to the regulation from time to time.

### 4. Access and Disconnection

- 4.1 The DISCOM's personnel may enter the Eligible Consumer's premises to inspect the Eligible Consumer's protective devices and read or test the meter at any time.
- 4.2 The DISCOM shall have the right to disconnect the Rooftop Solar PV System of an eligible consumer from its system at any time on the following situations / conditions:
- (i). Emergencies or maintenance requirement of DISCOM's electric system;
  - (ii). Hazardous conditions existing on the DISCOM's system due to operation of the Rooftop Solar PV System or the protective equipment, as determined by the DISCOM /TRANSCO / State Load Dispatch Centre (SLDC);
  - (iii). Adverse electrical effects, such as power quality problems, on the electrical equipment of other consumers of the DISCOM caused by the Rooftop Solar PV System as determined by the DISCOM.

### 5. Clearances and Approvals

- 5.1 The Solar power produced shall be injected in to the grid of DISCOM only after obtaining prior approval from competent authority of DISCOM and meeting all the requirements of departmental standards, viz., protection switchgear, metering, feasibility approval etc.



Divisional Engineer (Elect)  
Operation, Medchal TSSPDCL  
Anelagada, Jeedimetla (V), Sec'bar

Manoj  
PRINCIPAL

Siva Sivani Degree College  
Kompally, Medchal-Malkajgiri(Dt)-500100

*Prasanna*  
President/Vice President

5.2 The Eligible Consumer shall not commence parallel operation of the net metering facility until the Eligible Consumer has received approval to operate from the competent authority of DISCOM.

5.3 The Eligible Consumer shall insure and get the statutory approvals for more than 75KW from appropriate safety authority (CEM) of the connected electrical equipment and solar panels before plant commissioning. Solar PV System having capacity up to 75 KW shall be inspected, tested and self certified by the eligible consumer with regard to the safety and protection.

The Eligible Consumer shall install any additional equipment or additional Solar panels after obtaining prior permission in writing from the DISCOM, failing which, the DISCOM may cancel the Net Metering Agreement after giving an opportunity in writing.

**Date of enforceability of the Agreement**

This agreement will be in a force for a period of 25 years from the date of connection of the Rooftop Solar PV system with the Grid, after meeting all the requirements by the Eligible Consumer under the conditions of this Agreement and in accordance with the Regulation No.6 of 2016 and its future amendments, if any.

**7. Settlement of energy charges**

The accounting of electricity exported and imported by the Eligible Consumer shall become effective from the date of connectivity of the Rooftop Solar PV System with the distribution grid of the DISCOM.

7.1 if the quantum of electricity exported exceeds the quantum imported during the Billing Period, the excess quantum shall be carried forward to the next Billing Period as credited Units of electricity and the eligible consumer shall get a monthly minimum bill; if the quantum of electricity Units imported by the Eligible Consumer during any Billing Period exceeds the quantum exported, the DISCOM shall raise its invoice for the net electricity consumption after adjusting the credited Units of electricity as per applicable retail supply tariff decided by regulatory commission to the concerned DISCOM.

*Prasanna*  
President/Vice President

7.2 The unadjusted net credited Units of electricity shall be settled by the DISCOM twice in a year viz., in June and December. The net export units credited for the six month period shall be settled at its average cost of power purchase as approved by the Commission for that year or as mentioned in clause no.10.3 of TSERC (Net Metering Rooftop Solar PV Grid Interactive System) Regulation No. 06 of 2016 and any modification/ amendment to the regulation from time to time. The sum so arrived shall be either adjusted in the next month electricity bill or deposited in the bank account of the eligible consumer furnished to the DISCOM at the time of filing of the application. Provided that at the beginning of each of the Settlement Period, the cumulative quantum of imported electricity carried forward shall be re-set to zero.

7.3 The payment for excess units injected into grid will be made effective from the date of connectivity with the grid till the validity of this agreement.



*Mamath*  
Divisional Engineer (Elect)  
Operation, Medchal TSSPDCL  
Vengal Rao, Jasti (P), Medchal-11.

*Mamath*  
**PRINCIPAL**  
Siva Sivani Degree College  
Kompally, Medchal-Malkajgiri(Dt)-500100

7.4 In case the applicable tariff provides for billing on kVAh basis, the net drawl or injection of energy shall also be measured in kVAh.

7.5 When an eligible consumer cancels the Net metering Agreement entered into with the DISCOM after giving a month's notice, then, unused electricity credits shall be paid at a rate of Rs 0.50/kWh by the DISCOM or at a rate as notified by the Commission from time to time and ceases to be an eligible consumer thereafter.

#### 8. Metering Arrangement

The installation of meters including CTs & PTs, wherever applicable, shall be carried out as per the departmental procedures in vogue with prior permission of DISCOMs. The Eligible Consumer shall bear the entire cost of CTs & PTs including its accessories. The DISCOM will provide the Net Meter at the Eligible Consumer premises as per Clause 9.2 of TSERC (Net Metering Rooftop Solar PV Grid Interactive System) Regulation No. 06 of 2016 and any modification/ amendment to the regulation from time to time

#### 9. Standards for Solar panels

9.1 The Solar PV panels proposed to be installed shall meet the requirements of Indian as well as IEC standards and also to follow power quality measures as per International or Indian standards and/or other such measures provided in Clause 8 of TSERC (Net Metering Rooftop Solar PV Grid Interactive System) Regulation No. 06 of 2016 and any modification/ amendment to the regulation from time to time. Further, the documentary evidence proving the prescribed standards has to be furnished by Eligible Consumer to the competent authority of DISCOM before commencing the plant into operation.

9.2 The DISCOM on inspection at the time of according of permission to install the net metering arrangement or at any time thereafter, finds that, the eligible consumer has installed equipment not confirming to the standards published by the International Electro-technical Commission (IEC) or Bureau of Indian Standards (BIS) as a part of the net metering arrangement in the consumer's premises, the vendor of the equipment shall be blacklisted

9.3 Further, the DISCOM reserves the right to withdraw the permission to the net metering arrangement and cancel the net metering agreement with the eligible consumer after giving an opportunity in writing.

#### 10. Interruption or Reduction of delivery

The DISCOM shall not be obligated to accept and may require Eligible Consumer to interrupt or reduce deliveries when necessary in order to construct, install, repair, replace, remove, investigate, or inspect any of its equipment or part of its system; or if it reasonably determines that curtailment, interruption, or reduction is necessary because of emergencies, forced outages or compliance with prudent electrical practices. Whenever possible, the DISCOM shall give the Eligible



Divisional Engineer (Elect)  
Operation, Medchal TSSPDCL  
Vennelagadda, Jendimolla (V), Sec'bad-55.

*Mamellap*  
PRINCIPAL

Siva Sivani Degree College  
Kompally, Medchal-Malkajgiri(Dt)-500100

President/Vice President  
President/Vice President

Consumer reasonable notice of the possibility that interruption or reduction of deliveries may be required.

**11. Obligation of Consumer to pay all charges levied by DISCOM**

11.1 The Eligible Consumer shall abide by the rules and shall pay the Maximum Demand Charges, energy charges, surcharges and other charges, if any, to the DISCOM in accordance with the notified Tariff besides the applicability of the General Terms and Conditions of Supply prescribed by the TSERC from time to time.

11.2 The Eligible Consumer shall pay the minimum charges every month as prescribed in retail supply Tariff and as per General Terms and Conditions of supply, even if no electricity is consumed for any reason whatsoever and also if the charges for electricity actually consumed are less than the minimum charges.

**Theft of electricity or unauthorised use of electricity**

Eligible Consumer, found indulging in theft of electricity or unauthorized use of electricity shall pay the penal/additional charges as may be levied by the DISCOM besides disconnection of supply as per the provisions of IE Act 2003 and General Terms and Conditions of supply.

**13. Termination of the Agreement**

13.1 In case the LT/HT Agreement for Supply of an Eligible Consumer gets terminated then the Net Metering Connection Agreement deems to be terminated.

13.2 The agreement will be terminated only after its completion period until all the safety standards are adhered to. The DISCOM has the right to terminate the agreement on breaching of any of the rules agreed upon with one month notice. If Eligible Consumer intends to pre close or terminate the agreement, Eligible Consumer may do so with 1 (one) month prior notice.

**14. Dispute Resolution**

The Eligible Consumer shall have recourse, in case of any dispute with the DISCOM regarding the billing, to the mechanism specified in sub-Sections (5) to (7) of Section 42 of the Act for the redressal of grievances.

Siva Sivani Educational Society

President/Vice President

For S.P. Sampath  
Siva Sivani Educational Society  
Signature of Eligible Consumer

Date: 28/02/23  
President/Vice President

Witness G. Ramesh  
Signature: G. Ramesh

Name & Address: Alwal  
Date: Hyderabad - 500010  
28/02/23

Competent Authority from Discom  
(with stamp)  
Date:

Witness  
Signature: Aswini Bhat  
Name & Address: Old Bowenpally, Secunderabad  
Date: 28/2/23

dmah  
Divisional Engineer (Elec)  
Operation, Medchal TSSPDCL  
Vonnalagadda, Jeedimetla (V), Sec'bad-50.



Mamatha  
**PRINCIPAL**  
Siva Sivani Degree College  
Kompally, Medchal-Malkajgiri (Dt)-500100

GOVERNMENT OF TELANGANA  
ELECTRICAL INSPECTORATE  
(An IS/ISO 9001: 2015 Certified Department)



From:  
The Deputy Chief Electrical Inspector  
To Government, Hyderabad  
5th Floor, R & B Building,  
Masabtank, A.C Guards,  
Hyderabad 500 004.

To:  
M/S S P SAMPATHYS SIVA SIVANI EDUCATIONAL SOCIETY,  
PLOT NO. 38P & 39 SY.NO. 123 TO 125 & 142 KOMPALLY  
Village,  
QUTHBULLAPUR Mandal,  
MEDCHAL District.

Lr.No: Dy.CEIG-HYD/TS/EI Ex. 650V/5367/D.No: 459/2023 Dated: 23-02-2023.

Sir

Sub: The Electricity Act, 2003 and Central Electricity Authority (Measures relating to Safety and Electric Supply Regulations 2010 – Installation of Voltage Exceeding 650V of M/s S P SAMPATHYS SIVA SIVANI EDUCATIONAL SOCIETY, SY.NO. 123 TO 125 & 142, KOMPALLY Village, QUTHBULLAPUR Mandal, MEDCHAL District – Statutory Approval under Section 54 of the Electricity Act-2003 and Regulation 43(4) of Central Electricity Authority (Measures relating to Safety and Electric Supply) Regulations 2010 – Accorded.

Ref: 1. Inspection dated: 22-02-2023  
2. Your letter Received on dated: 23-02-2023.

\*\*\*

Under Section 54 of the Electricity Act-2003 and Regulation 43(4) of Central Electricity Authority (Measures relating to Safety and Electric Supply) Regulations, 2010, the following equipment of your Electrical Installation of voltage Exceeding 650V are approved for energisation.

AS PER ANNEXURE ENCLOSED

Under Regulation 43(4) of Central Electricity Authority (Measures relating to Safety and Electric Supply) Regulations, 2010, any additions or alteration in your above Electrical Installation shall not be connected to supply until the same are approved in writing by this office and offer for annual inspection under Regulation 30 of Central Electricity Authority (Measures relating to Safety and Electric Supply) Regulations, 2010 every year to the concerned Deputy Electrical Inspector.

Under Regulation 13(4), 46(7) of Central Electricity Authority (Measures relating to Safety and Electric Supply) Regulations, 2010, you are at all times solely responsible for the maintenance of the above installation on such condition as to be free from danger.

The above approval accorded is without prejudice to the statutory/ mandatory obligations to be fulfilled by you under various other acts and rules as the case may be.

The approval accorded for energizing the electrical equipment is the safety for men and machine from electrical hazards in your installation and ipso facto does not confer any right to be used for any other purpose other than for which the approval is accorded.

The original manufacturer Test certificates of Transformer etc. are accepted and returned.



Yours faithfully

*S. Hine*  
23/2/23

DEPUTY CHIEF ELECTRICAL INSPECTOR  
TO GOVERNMENT HYDERABAD

Encl: Test Certificates & List of Load Particulars

- 1) Copy to the Divisional Engineer/Operation/,Medchal. The date of release of supply may be intimated to Deputy Electrical Inspector,RR-I,Sub-Division (Verify the approval in TSCEIG.CGG.GOV.IN website in third party verification column before the energization of the supply.)
- 2) Copy to the Deputy Electrical Inspector, RR-I Sub-Division along with enclosures.

*Mamallap*  
PRINCIPAL

Siva Sivani Degree College  
Kompally,Medchal-Malkajgiri(DT)-500100



ANNEXURE TO I.R.NO.DY.CEIG/HYD/T5/HT/5367/ D.NO. 459/23, DT: 23-02-2023.

M/s S P SAMPATHYS SIVA SIVANI EDUCATIONAL SOCIETY,

PLOT NO. 38P & 39, SY.NO. 123 TO 125 & 142, KOMPALLY VILLAGE, QUTHBULLAPUR MANDAL, MEDCHAL DISTRICT.

Sl. No.	Particulars of Equipment	Existing Load Capacity/Voltage Ratio	Additional Load Capacity/Voltage Ratio	Deleted Load Capacity/Voltage Ratio	Total Load
<b>1.</b>	<b>TRANSFORMERS</b>				
	TRANSFORMER	CAP: 250 KVA, 11KV/433V MAKE: CLASSIC TECHNOLOGIES (P) LTD SL NO: 0322127	NIL	NIL	CAP: 250 KVA, 11KV/433V MAKE: CLASSIC TECHNOLOGIES (P) LTD SL NO: 0322127
<b>2.</b>	<b>H.T. BREAKER</b>	CAP: 630 AMPS, 11 KV MAKE: MEGAWIN SL NO: 2018197	NIL	NIL	CAP: 630 AMPS, 11 KV MAKE: MEGAWIN SL NO: 2018197
<b>3.</b>	<b>SOLAR INSTALLATION</b>				
	1. SOLAR INVERTERS	NIL	60 KW, 415V. + 20 KW, 415V.	NIL	60 KW, 415V. + 20 KW, 415V.
	2. SOLAR MODULES	NIL	(293 No's x 327Wp), 415V.	NIL	(293 No's x 327Wp), 415V.
<b>4.</b>	<b>M.V.LOADS</b>				
	1. MOTORS	8 HP, 415V.	NIL	NIL	8 HP, 415V.
	2. CAPACITOR	85 KVAR, 415V.	NIL	NIL	85 KVAR, 415V.
<b>5.</b>	<b>L.V.LOADS</b>				
	1. LIGHTING LOAD	24 KW, 230V.	NIL	NIL	24 KW, 230V.
	2. LV LOAD	30 KW, 230V.	NIL	NIL	30 KW, 230V.
	3. A/C's	62.4 KW, 230V.	NIL	NIL	62.4 KW, 230V.



*J. hini - 8*  
*23/2/23*  
DEPUTY CHIEF ELECTRICAL INSPECTOR  
TO GOVERNMENT HYDERABAD

# S.P. SAMPATHY'S SHIVA SHIVANI EDUCATIONAL SOCIETY

P.NO: 38P & 39, SY.NO: 123 TO 125 & 142, KOMPALLY QUTHBULLAPUR MANDAL, MEDCHAL DISTRICT.

## SOLAR INVERTERS LOAD DETAILS

SI.NO	EQUIPMENT NAME	MAKE	SI.NO	CAPACITY
1	INVERTER - 1	THEA	SE-TH 50.OTL3,	60KVA
2	INVERTER - 2	THEA	SE-TH01 20.0 TL3	20KVA
3	SOLAR MODULES LOAD			327Wp X 293NOS = 96KWp

EXISTING LOAD: MV 13HP + LV AC 62.4KW + LV 30KW + LL 24KW + 85KVAR CAPACITOR + 125KVA D.G. SET + 250KVA TRANSFORMER

ADDITIONAL LOAD: INVERTERS 60KW + 20KW + SOLAR MODULES (327Wp X 293 NOS) = 96KWp

TOTAL LOAD: MV 13HP + LV AC 62.4KW + LV 30KW + LL 24KW + 85KVAR CAPACITOR + INVETER 60KW + 20KW +

SOLAR MODULES (327Wp X 293 NOS) = 96 KWp + 125KVA D.G. SET + 250KVA TRANSFORMER

For S.P. SAMPATHY'S SHIVA SHIVANI EDUCATIONAL SOCIETY

*S.P. Sampathy*

(Authorized Signatory)

*BC*  
RELIANCE ELECTRICAL

L.No: <sup>A</sup>7989 1-1478

**APPROVED**

*J. hani - e*  
23/2/23  
Dy. Chief Electrical Inspector or to Govt  
HYDERABAD.



*Namath*  
**PRINCIPAL**

Siva Sivani Degree College  
Kompally, Medchal-Malkajgiri (Dt)-500100



S. P. Sampathy's Siva Sivani Group®  
S. P. Sampathy's Siva Sivani Educational Society (2906/97)  
**SIVA SIVANI DEGREE COLLEGE**  
(Affiliated to Osmania University)

**PEDESTRIAN FRIENDLY WALK WAYS:**

Pedestrian-friendly walkways on a college campus, designed to prioritize the safety and comfort of students, faculty, and visitors. Roads inside the college are well maintained. Pedestrians can walk safely through the college through walk friendly pathways. The college has improved pedestrian visibility, additional area for pedestrian queuing, and a location for sidewalk amenities and landscaping. The college's pedestrian-friendly walkways not only facilitate easy navigation but also contribute to a vibrant and welcoming campus environment.



*Mamela*

NH – 44, Kompally, Secunderabad – 500 100. Telangana, INDIA  
Mobile: - +91-9247048112. Website: [ssdc.ac.in](http://ssdc.ac.in)



**PRINCIPAL**  
Siva Sivani Degree College  
Kompally, Medchal-Malkajgiri (Dist)-500100



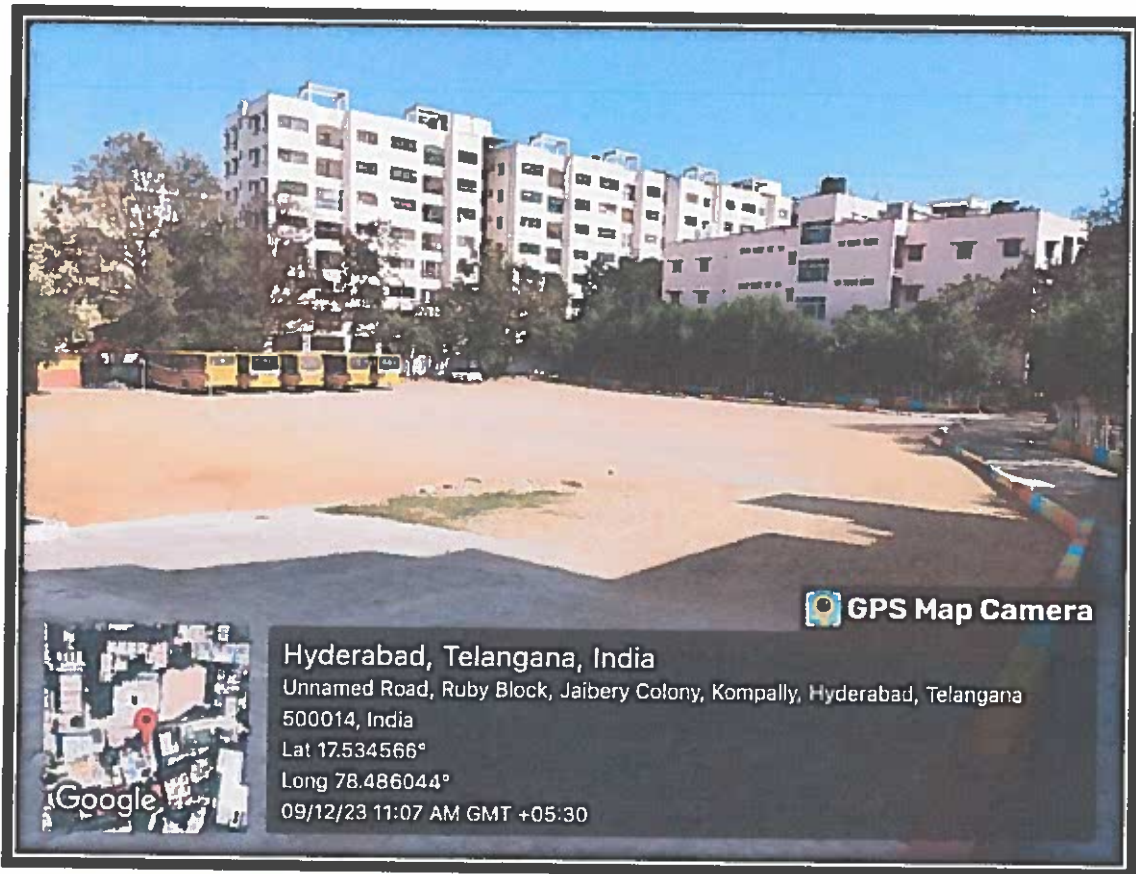
S. P. Sampathy's Siva Sivani Group ®  
S. P. Sampathy's Siva Sivani Educational Society (2906/97)

## SIVA SIVANI DEGREE COLLEGE

(Affiliated to Osmania University)

### PLAY GROUND:

Let's envision a college campus with a vibrant and diverse play area. The college playground is a hub of activity, surrounded by academic buildings and green spaces. Students from various backgrounds are engaged in different activities during their breaks or free time. It is a vibrant playground, laughter echoes, friendships are forged, and memories are created. It stands as a testament to the importance of play in student development, providing a safe and joyous space for the community to come together and celebrate the spirit of youth.



NH - 44, Kompally, Secunderabad - 500 100, Telangana, INDIA  
Mobile: - +91-9247048112. Website: [ssdc.ac.in](http://ssdc.ac.in)

*Mamaji*  
**PRINCIPAL**  
Siva Sivani Degree College  
Kompally, Medchal-Maikajiri (D-500100)



S. P. Sampathy's Siva Sivani Group \*  
S. P. Sampathy's Siva Sivani Educational Society (2906/97)  
**SIVA SIVANI DEGREE COLLEGE**  
(Affiliated to Osmania University)

**E-WASTE MANAGEMENT:**

Implementing effective e-waste management at a college is crucial for promoting sustainability and responsible environmental practices. E-Waste represents a complex challenge in the modern world, requiring a comprehensive and sustainable approach to management. As society continues to embrace technological advancements, addressing the issues associated with e-waste becomes increasingly vital for the well-being of the environment and future generations. The college establishes partnerships with certified e-waste recycling companies to responsibly dispose of collected electronic waste. These recyclers adhere to environmentally friendly practices and ethical standards.



NH - 44, Kompally, Secunderabad - 500 100, Telangana, INDIA  
Mobile: - +91-9247048112. Website: ssdc.ac.in

*Mame Gp*  
PRINCIPAL  
Siva Sivani Degree College  
Kompally, Madchal-Malkajgiri (Dt)-500100



### DRINKING WATER PURIFIERS AND STORAGE TANK:

Drinking water purifier system for a college campus, designed to provide clean and safe drinking water to students, faculty, and staff. A drinking water purifier is an essential appliance to ensure the availability of clean and safe drinking water. With various technologies and features available, consumers can choose a purifier that suits their specific water quality concerns and preferences.

Students health safety is ensured by installation of the water purifier with the capacity of 4000 liters.

The college's drinking water purifier system not only prioritizes the health and well-being of the campus community but also aligns with sustainable practices and environmental consciousness.



NH – 44, Kompally, Secunderabad – 500 100. Telangana, INDIA  
Mobile: - +91-9247048112. Website: [ssdc.ac.in](http://ssdc.ac.in)

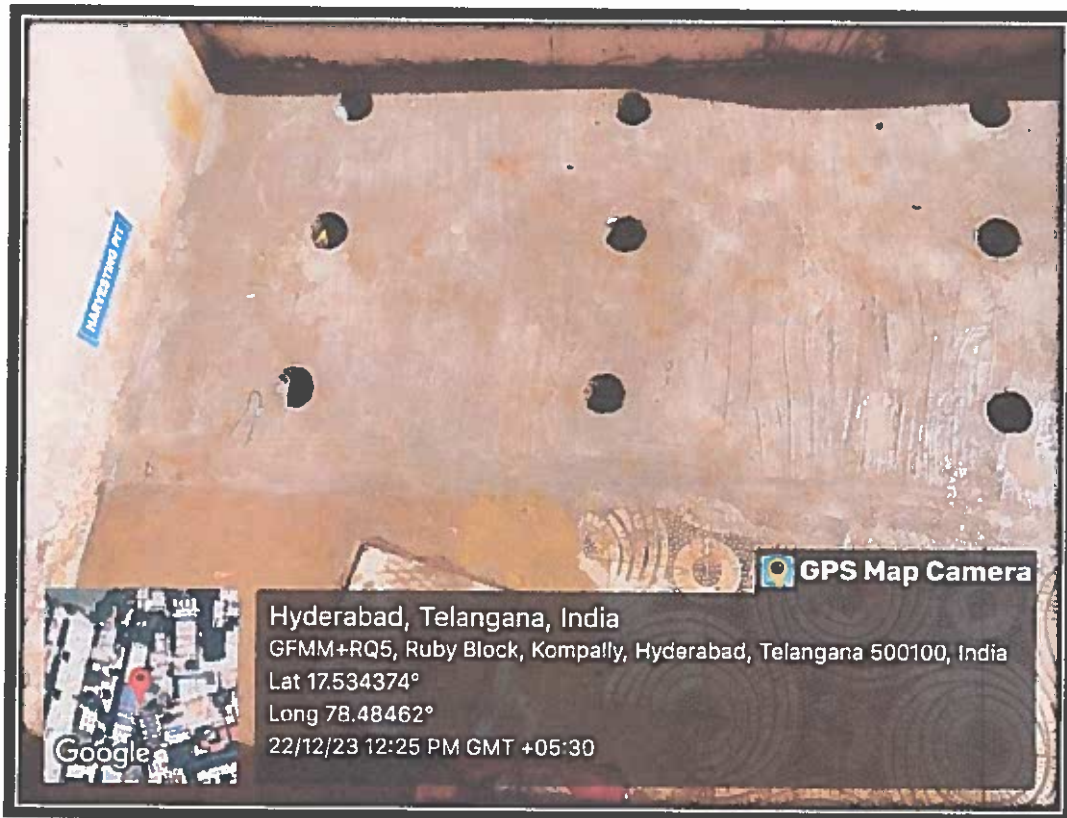
*Mamata*

**PRINCIPAL**  
Siva Sivani Degree College  
Kompally, Medchal-Malkajgiri (Dt)-500100



## RAIN WATER HARVESTING PIT

Rain water harvesting pits are implemented in the college to have a sustainable and eco-friendly solution to address water needs. The stored water is used for gardening and raw use. Rainwater harvesting system, also called rainwater collection system or rainwater catchment system, technology that collects and stores rainwater for human use. The rainwater harvested during rains not only helps to save water from conventional sources, but also to save energy and reduce expenses incurred on transportation and distribution of water.



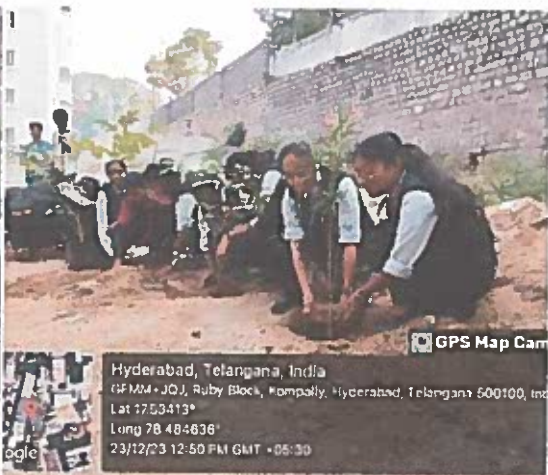


S. P. Sampathy's Siva Sivani Educational Society (2906/97)

# SIVA SIVANI DEGREE COLLEGE

(Affiliated to Osmania University)

## GREEN CAMPUS



NH - 44, Kompally, Secunderabad - 500 100, Telangana, INDIA  
Mobile: - +91-9247048112. Website: ssdc.ac.in

*Manavally*  
**PRINCIPAL**  
Siva Sivani Degree College  
Kompally, Medchal-Malkajgiri(Dt)-500101





S. P. Sampathy's Siva Sivani Educational Society (2906/97)

# SIVA SIVANI DEGREE COLLEGE

(Affiliated to Osmania University)



Hyderabad, Telangana, India  
GFMP - CP6, Ruby Block, Kompally, Hyderabad, Telangana 500100, India  
Lat 17 533756°  
Long 78 486087°  
11/01/24 04:30 PM GMT +05:30



Hyderabad, Telangana, India  
Selen Court, Sree Venkai Towers, Ruby Block, Kompally, Hyderabad, Telangana  
Lat 17 53425°  
Long 78 486126°  
11/01/24 04:37 PM GMT +05:30



Hyderabad, Telangana, India  
Ruby Block, NCL Colony, Ruby Block, Kompally, Hyderabad, Telangana 500100, India



Hyderabad, Telangana, India  
Ruby Block, NCL Colony, Ruby Block, Kompally, Hyderabad, Telangana  
Lat 17 533564°  
Long 78 485201°  
11/01/24 04:42 PM GMT +05:30



NH - 44, Kompally, Secunderabad - 500 100, Telangana, INDIA  
Mobile: - +91-92470-48112. Website: [ssdc.ac.in](http://ssdc.ac.in)

*Manoj*  
**PRINCIPAL**  
Siva Sivani Degree College  
Kompally, Medchal-Malkajgiri (Dt)-500100



S. P. Sampathy's Siva Sivani Educational Society (2906/97)  
**SIVA SIVANI DEGREE COLLEGE**

(Affiliated to Osmania University)



*Manoj*  
**PRINCIPAL**  
Siva Sivani Degree College  
Kompally, Medchal-Malkajgiri(Dt)-500100

NH - 44, Kompally, Secunderabad - 500 100, Telangana, INDIA  
Mobile: - +91-9247048112. Website: [ssdc.ac.in](http://ssdc.ac.in)