



SIVA SIVANI DEGREE COLLEGE



(Affiliated to OSMANIA UNIVERSITY)
NH-44, Kompally, Secunderabad, Telangana-500100.



PLACEMENTS 2022-2023

800+
PLACEMENTS

40+
COMPANIES

₹7.0 LPA
HIGHEST PACKAGE

UG PROGRAMMES OFFERED

STUDY OF MANAGEMENT

Bachelor of Business Administration (BBA)
BBA (Business Analytics)*

STUDY OF COMMERCE

B.Com (Computer Applications)
B.Com (Business Analytics)
B.Com (Honours)

STUDY OF SCIENCES

B.Sc (Computer Science - MSCs)
B.Sc (Data Science)
B.Sc (Computer Science)



Mahesh
PRINCIPAL
Siva Sivani Degree College
Kompally, Madhwal, Hyderabad, Telangana

SALIENT FEATURES

- ❖ Top Ranked - Equipped with knowledge and Skill Based 'A Can Do' Attitude.
- ❖ Instructional Learning - Based on the Case Study opportunity to work on Live Projects.
- ❖ Constant Self-Reflection and Matching to the Industry Competition.
- ❖ Campus Recruitment - Having a tailor made program for the students who want to focus on to the corporate world.
- ❖ Endorse Support Learning through Guest Lectures, Workshops & Seminars.
- ❖ These **LEARNING OBJECTIVES** help students to develop individual growth in team pooling and engage in the exchange of ideas and discussion.
- ❖ Favorable blend of Classroom knowledge and real World Experience - Mock Interviews.
- ❖ Expertise with a Vision to Collaborate Education with Business World through Research & Development.
- ❖ In-Class Teaching by Using Latest Cutting Edge Technologies and problem solving skills.
- ❖ Industry interaction with Periodicals Seminars with industry heads.
- ❖ Hobby development initiative leading to personal growth and skill acquisition of the student.
- ❖ Promote and support the development of entrepreneurship skill and knowledge among students.
- ❖ Realtime internship programmes will be assigned to the students for acquiring the knowledge.

*Apart from the regular course of study we encourage Our students to undertake various certification courses to equip themselves with latest technologies to have an **EDGE AHEAD**.*

Training & Certifications

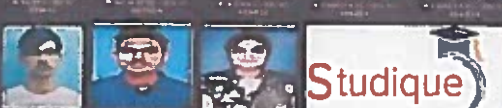
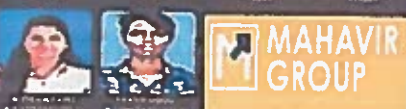


TEACHING METHODOLOGY



Mameta
PRINCIPAL
 Siva Sivan Degree College
 Kompally, Madhwal, Khammam, T.S.R.

PLACEMENTS - 2022-23



Mamatha
PRINCIPAL
 Siva Sivani Degree College
 Kompally, Medchal Malkajgiri, Annamalai

PLACEMENTS - 2022-23

The grid displays numerous student portraits and logos of companies where they were placed. Key logos visible include:

- taxilla
- METRIXLAB
- wipro
- CITY UNION BANK LTD
- sagility™
- ADP
- Anuhar
- movate
- regali
- NCL GROUP
- incor
- THE DOLLAR



Manoj
PRINCIPAL
Siva Sivani Degree College

PLACEMENTS - 2022-23



Mameta
PRINCIPAL
Siva Sivani Degree College
Kompally, Medchal-Malkajgiri (Dt)-500 104

PLACEMENTS - 2022-23



Naneta
PRINCIPAL
 Siva Sivani Degree College
 Kompally, Medchal, Malakpet, Hyderabad

Academic Training Sessions @ SSDC



Mameta
PRINCIPAL
Siva Sivani Degree College
Kompally, Medical, Medakaluri (M) 500008



SIVA SIVANI DEGREE COLLEGE



(Affiliated to OSMANIA UNIVERSITY)
NH 44, Kompally, Secunderabad, Telangana 500100

www.ssdcc.ac.in



In collaboration with
Harvard Business School Online



COURSES OFFERED

Bachelor of Business Administration (BBA)

B.Com (Honours)

B.Com (Comp Applications)

B.Com (Business Analytics)

B.Sc (Data Science)

B.Sc (MECs & MSCs)

B.Sc (MCCs)



Manjetha
PRINCIPAL
Siva Sivani Degree College
Kompally, Medchal-Malkajgiri (Dist) 500100

CERTIFICATION COURSES



Case Studies

A method that involves an up-close, in depth and detailed investigation of a subject of study and its related contextual position. A case study helps in understanding of a complex issue or object thus building the foundation for applying ideas to certain issues.

Workshops

We conduct various workshops on diversified subjects to extract the best out of the student, with outdoor workshops, Management Games and helps them to come out of their comfort zone and think bigger.

Realtime Projects

Students are given hands on experience on various realtime projects, like circuits designing, mathematical applications, computer programming, Companies financial Analysis

Research Methodology

SSDC has carved a niche in designing the specific procedures or techniques used to identify, select, process, and analyze information about every topic.



Harvard Business School Online

SPSSSES is pleased to collaborate with Harvard Business School Online to offer Students and Alumni an exceptional and enriching learning experience.

Harvard Business School Online courses

- Business Analytics
- Entrepreneurship Essential
- Credential of Readiness (CORe)
- Disruptive Strategy
- Global Business
- Economics for Managers
- Sustainable Business Strategy
- Negotiation Mastery
- Financial Accounting
- Management Essentials



SALIENT FEATURES

- ❖ Top Ranked: Equipped with knowledge and Skill Build-A Can-do-attitude.
- ❖ Instructional learning – based on Case study Opportunity to work on live projects
- ❖ Constant self refinement and matching to the industry competition
- ❖ Embrace support learning through Guest Lectures Workshops and Seminars.
- ❖ Envious blend of classroom knowledge and real world Experience: MOCK Interviews
- ❖ Expertise with a vision to connect education with Business world through Research & Development
- ❖ In Class teaching by using latest cutting edge technologies and problem solving skills

Marejip
PRINCIPAL

Siva Sivani Degree College
Kompally, Madchal-Malkejgir(Dt)-500 100

Activities & Flagship Programmes



INFOSYS INDUSTRIAL VISIT

OUTDOOR MANAGEMENT WORKSHOP

MOCK INTERVIEWS

GUBBA INDUSTRIAL VISIT

R&D ON DHABS IN HIGHWAY

CRT TRAINING

THE HINDU INDUSTRIAL VISIT

MANAGEMENT WORKSHOP

KNOWLEDGE SHARING ACTIVITY

CULTURAL FEST

SPORTS MEET SADHANA

REPUBLIC DAY CELEBRATIONS WITH NSS

SAMAY 2020

YOGA AND MEDITATION

NATIONAL SERVICE SCHEME
MAHA UNIVERSITY
Hyderabad

Eco-Friendly Ganesh

FRESHERS DAY



Manappa
PRINCIPAL
Siva Sivani Degree College
Kompally, Medchal-Malkajgiri



SIVA SIVANI DEGREE COLLEGE

Affiliated to Osmania University



ANALYSIS
SOLUTION
PROCESS
OBJECTIVES
TEAMWORK
VISION
SALES

P R O S P E C T U S

for more details

<https://www.ssdcc.ac.in>



Manoj
PRINCIPAL
Siva Sivani Degree College



Manoj
PRINCIPAL
Siva Sivani Degree College
Kompally, Madhul-Malkajgiri (DN-500100)

A TRIBUTE

Sri S.P. Sampathy
Founder, Siva Sivani Group of Institutions



The Founder of Siva Sivani Group of Educational Institutions was a man with a vision and believed that nothing is impossible for those who think they can. In 1961, Sri Sampathy started his journey with a mere 25 paise in his pocket and filled with a zeal to create history by continuously evolving and providing top quality education. His dedication and positive attitude helped him brave all the odds and establish an education empire which today is known as Siva Sivani Group of Educational Institutions, a place where personal growth is achieved in tandem with peace, progress and prosperity of the human society at large.

In pursuit of providing quality education and to create future business leaders, he branched towards the outskirts of twin cities where ample land was purchased to set up a state-of-the-art educational institution with all the amenities in house for all round development of the aspiring students in 1983 and later in 1989 a second milestone was achieved at Kompally which now houses the Siva Sivani Institutions comprising of Siva Sivani Institute of Management (SSIM), Siva Sivani Degree College (SSDC) and SPS High School. His passion and commitment towards innovation and adaption to newer technologies to provide better education lead to paperless classrooms in 2002, comparable to the best in the world. During his life time, Sri S.P. Sampathy held many Honorary posts including the President of the Andhra Pradesh Private Schools Association, Convener ISC and ICSE Examinations of Hyderabad, Advisory Member on Boards of various Educational Institutions to mention a few.

He was the recipient of the Best Vidyapeeth Award presented by Her Excellency, The Governor of Andhra Pradesh, the Arch of Excellence Award, the Teacher of Teachers Award amongst innumerable other appreciations and accolades.

We, the members of the Siva Sivani family are committed and dedicated to the vision and mission of Sri S.P. Sampathy and constantly evolve ourselves to the future needs and provide education that makes the world a better place to live in.



Manoj
PRINCIPAL
Siva Sivani Degree College
Kompally, Medchal - Malkajgiri (Dt)-500100



FROM THE PRESIDENT'S DESK



The Journey of this giant called Siva Sivani over the last more than half a century, from the 3rd of August 1961 to be exact, has been on a meandering path but always uphill. Guided by the Founder, who always chose the less trodden pathways and more often than not dared to begin a trail in wilderness, Siva Sivani has always dreamed big and lived those dreams successfully. Between daring to start the first ICSE School in Sanathnagar, decades ago, to starting the first standalone, non university, non Government, All India Council for Technical Education, Ministry of Human Resources Development, Government of India approved B-School in Andhra Pradesh in 1992 to being the first authorized center for the Institute of Commercial Management of UK in Andhra Pradesh, there are innumerable firsts in the saga of these group institutions.

As always, I am sure that Siva Sivani Degree College will provide quality education to all its pupils. Change, it is said, is the only constant in progress and we at Siva Sivani have constantly been keeping pace with change. We are now in an era where things move at speeds surpassing those of light and sound. Time is now of utmost importance, with a foregone conclusion that quality is not compromised even a wee bit for moving at a faster pace. This is the order of the day, in all walks of life and hence equally applicable to the arena of education. To keep abreast with this change, we have now started on a path, which, as in the past, will keep us that one elusive step ahead of our counterparts elsewhere.

I welcome you, as co travelers on this path, to quality education at a faster pace and help realize your dreams that much faster. We intend to hasten the process of turning you into responsible, creative, positive and contributing citizens of our Global Village.

Smt. S. Aarathy
President & Chief Executive
Siva Sivani Group of Institutions



Manvelly
PRINCIPAL
Siva Sivani Degree College
Kompally, Medchal-Malkajgiri(Dt)-500100

VICE PRESIDENT



Greetings from SSDC, a dynamic, progressive and ever expanding institution. Relentlessly surging ahead on our chosen path, (excelling in providing qualitative education), has been the hall mark of the more than five decades old Siva Sivani group, of which, the more than a decade old SSDC is an integral part.

In the quest of its dream of becoming a 'University' Siva Sivani has been successful in forging ties in domestic and global arenas at individual and institutional levels. Faculty exchanges, Student exchanges, Joint Certification Programmes, Research, Training and Allied activities at these levels are now routine at SSIM.

In order to help some of our students seeking additional qualifications at institutions outside the country become easier, agreements of credit transfers, joint certification courses, acquiring foreign degrees and thereby creating opportunities of seeking employment in Europe, America and the rest of the globe are already in place.

Arrangements for accomplished personalities both from the industry and academia in Europe and America, in addition to people with similar caliber in India, to handle courses in various programmes, thereby, enabling students of Siva Sivani to have ample global exposure at the campus itself have been made.

Goals are achieved at a rapid pace if more and more like minded people come together.

With many initiatives undertaken and hundreds of like minded people being added each year to the already vast Siva Sivani family, we have moved that much closer to achieving our goals. I invite you to become an integral part of this saga.

Sailesh Sampathy
Vice President & Dy. Chief Executive



Manoj
PRINCIPAL
Siva Sivani Degree College
Kompally, Modchal - Malkajgiri (Dt) - 500100



ABOUT US



A brain child of the dynamic Sri. S.P.Sampathy, Siva Sivani Degree College (SSDC) was established in the year 2002. Affiliated to the Osmania University which has a rich legacy of imparting quality education for more than 90 years and being a part of the S.P.Sampathy's Siva Sivani Group of Institutions, whose founder late Sri.S.P.Sampathy and the Cofounder Smt. S.Aarathy, presently the President and the Chief Executive of the Group, have had the experience of establishing and running world class educational institutions for nearly 50 years, SSDC, has dutifully traversed on the path hitherto used by the other group institutions and has carved a niche for itself in the arena of under graduate education in a short span of 12 years of existence.

Continuously finding place in the list of top performing institutions published by the Osmania University and producing a gold medallist within 10 years of inception in the year 2012 is no mean achievement.

A team of dedicated faculty headed by a principal who leaves no stone unturned for the advancement of her pupils, students of SSDC are always a step ahead of their counter parts elsewhere. A serene atmosphere, away from the hustle and bustle provides the right ambiance for the leaders and scholars of the future to not only enter academically but to leave the portals of the institution dazzling all round like a perfectly cut and carefully polished diamond.



Manjetha
PRINCIPAL
Siva Sivani Degree College
Kompally, Hyderabad

THE INTELLECTUAL TREASURE



OUR FACULTY

Under the expert guidance of the President and Chief Executive of the Group a young and dynamic team of faculty headed by an able principal ensure that the students spend unparalleled, invigorating, knowledge enhancing and quality time during their stay at SSDC. Each member of the faculty takes personal care of the students and constantly monitors their performance. Additional inputs are given to all students needing them, by way of one to one interaction between the student and the faculty apart from the regular class room interaction. The culture of the organization and the belief that every member of the group institutions is a member of the same family is followed in letter and spirit, more so by the faculty.

In addition to the exclusive faculty of SSDC, members of the other group institutions, especially SSIM, are requisitioned for giving inputs to the students on a fairly regular basis.

METHODOLOGY OF TEACHING

SSDC believes in a judicious mix of the traditional and modern teaching methods, as is the case in the other group institutions, thereby taking the best of both the systems and synergizing them to give manifold benefits to its students. In addition to the traditional chalk and talk method, audio visual equipment such as OHP, LCD Projector, television and allied equipment are used as and when necessary. Students are also given regular work to do at home in addition to the work done at the college. The regular unannounced weekly and term end examinations are conducted in addition to the examinations conducted by the Osmania University.

The progress of the students in all tests and examinations are closely monitored and the parents are also kept informed about the performance of their ward/s. Special attention is given to the students in all areas where the performance is not upto the mark.



Maneeta
PRINCIPAL
Siva Sivani Degree College
Kompally, Medchal, Hyderabad, 501 502



PERSONALITY DEVELOPMENT



Being a part of a group which also consists of one of the finest business schools of the country, SSDC lays emphasis on the all round development of a student in addition to academics. We also firmly believe that excellent communication skills must be possessed by every individual, if he/she is to progress in life both professionally and personally. A concerted effort is made to improve the oral, aural and written skills of the students through seminars, group discussions, debates, guest lectures, mock interviews, video films and expert talks by eminent people from the business world and academia, including experts from SSIM.



MANAGEMENT - OUR FLAGSHIP



Born in December 1992, SSIM carved a niche for itself and is now amongst the premier Management Institutions in the country.

The BBA course of SSDC draws a lot from these Premier Management Courses. In addition to covering the syllabi prescribed by the Osmania University, the BBA course at SSDC has a lot of other ingredients to churn out students who invariably can be counted amongst the best management undergraduates.

In order to gain first hand information about the various facets of an organisation, students are taken on regular industrial visits. A report must be submitted by each student after every visit enumerating the learnings from each visit.

Book review, company review and industry reviews are done by the students which not only improves their comprehending, writing and speaking abilities but also enhances the knowledge of the students and keeps them upto date with the latest happenings both company and industry wise. Each student is expected to have a prescribed business suit worn on special and specific occasions.

Ample care is taken to improve the writing and reading skills of the BBA Students. Regular guest lectures are delivered by practicing senior managers from the Industry in addition to lectures by faculty from SSIM.

In addition to the traditional learning methodology, a judicious mix of case based method is employed where a student needs to spend about four to six hours on preparation before taking up the case discussions.

An average student of the BBA class must be prepared to spend atleast four hours preparing at home in addition to the time spent in the class room. We sincerely advise students to choose this course only if they are prepared to work regularly for four to five hours at home for business is a serious activity and learning to administer business is almost sacrosant.



Mamaji
PRINCIPAL
Siva Sivani Degree College
Kompally, Medchal-Malkajgiri (DT)-500100



Presently, SSDC offers the following three year full time under graduate courses of the Osmania University.

Bachelor of Business Administration

- BBA

Bachelor of Commerce

- B.Com (Computer Applications)
- B.Com (Business Analytics)

Bachelor of Computer Sciences

- B.Sc (Mathematics, Statistics, Computer Science)
- B.Sc (Mathematics, Electronics, Computer Science)
- B.Sc (Mathematics, Statistics, Data Science)

Bachelor of life Sciences

- B.Sc (Applied Nutrition, Botany, Chemistry)



Manoj
PRINCIPAL
Siva Sivani Degree College
Kompally Medak

ADMISSION PROCEDURE



Admission Procedure: Admissions will be granted as per the Osmania University norms.

Rules for Withdrawals: A student who leaves the college in the middle of the course should pay fees in total for the complete course whatever may be the reason for leaving and Transfer Certificate will be issued only if the student clears all the dues.

Discipline: The students are expected to maintain exemplary conduct and character under all circumstances and maintain discipline and decorum both in the campus and outside. Any violation will be viewed seriously. Smoking is strictly banned in the campus. All students should adhere to the dress code stipulated by the college. No student will be allowed to enter the class once the faculty enters the class. A student who is not in the class by the time the faculty enters the classroom will have to spend the remaining time of the scheduled class in the library. He/She will be allowed to enter the next class before the next faculty enters the class. This is applicable only to the first class of the day. IN ALL MATTERS CONCERNING INDISCIPLINE, INTERPRETATION OF THE PRESIDENT AND CHIEF EXECUTIVE WOULD BE FINAL AND BINDING.

Dress Code: Our ancient scriptures state that a sound mind dwells only in a sound body. At SSDC we believe that in addition to a sound body, the mind requires a sound environment conducive to progress and development, if a goal is to be attained. Our goal is to impart the best education to our students and to create an environment which would hasten the process of true learning. The attire of all concerned must be suitable to conduct this serious activity. Therefore, a Dress Code has been evolved which must be strictly followed by all concerned. A breach of the dress code will entail penal action including dismissal from the college. For gentlemen, formal pants with shirts tucked in and formal shoes (Leather shoes) is prescribed. Sports shoes, jeans and t-shirts are strictly prohibited. They are not allowed to sport long hair. For ladies, sarees or salwar suits with formal leather footwear is prescribed (sports shoes and other attire other than what is stated supra is strictly prohibited).

SSDC believes that a student must always be ready, in all manner, to grab any opportunity that comes by, even unexpectedly, in order to attain / achieve the set goals. A lot of campus placements happen at SSIM and in the past organizations coming for placements to SSIM have asked for undergraduate students. In such cases students of SSDC will be exposed to those organizations whenever the need arises and it is therefore prudent to be ready at all times and face the challenges as they come instead of being unprepared and ruing at a lost chance. It is for this purpose also that a dress code has been evolved and is strictly implemented.



Mamatha
PRINCIPAL
Siva Sivani Degree College
Kannur, Kerala



ACHIEVEMENTS

Placements:

Thanks to strong placement team at SSIM, a number of students from degree college have secured jobs in reputed companies such as Wipro, Genpact, Igate, Muthoot Finance, Future-India, GE, Cognizant, Deloitte, TCS, Kotak, Infosys, ICICI, Tech Mahindra, Just Dial, Vivo, RB Associates, AGS Health, Shivam Enterprises etc.



Namath
PRINCIPAL
Siva Sivani Degree College
Kompanly, Medchal-Malkajgiri (Dt)-500102

EVENTS



'Spoothi' : Following the age old traditions of our rich and varied heritage every fresher joining SSDC is given a warm welcome into the Siva Sivani family on the 1st day. This event is aimed at giving an impetus i.e. force that makes the bonding happen more quickly and is befittingly named Spoothi.

'Sadbhavana' : A get together where the sense of togetherness and belongingness to one family firmly takes roots in the heart of every new entrant into the Siva Sivani family and celebrated with a festive gaiety is aptly named 'Sadbhavana'. Truly living the meaning of the word – a good feeling - the older members of the family consisting of the students, faculty and administrators get together and formally welcome the new entrants to their home – Siva Sivani.

'Sannihita' : The inter-collegiate meet of the undergraduate students organized by the students of SSDC. Sannihita is the flagship event of SSDC full of learning, bonding and fun. This event creates a platform for further bonding amongst the students of SSDC and between students of SSDC and other institutes thereby helping the students come closer to each other.

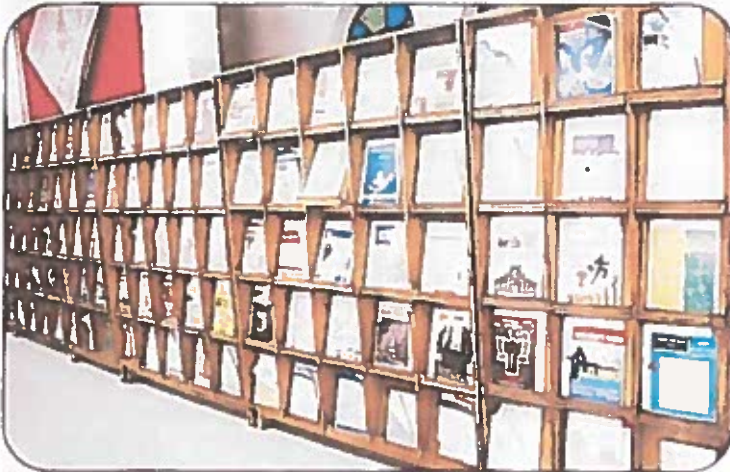
'Sahrudaya' : Having partaken the bliss of friendship, riding through the ups and downs together, the 1st and the 2nd year students get together to give a fond and warm adieu to the final year students. Resplendent with warm thoughts and good feeling and hearts and minds full of the times spent together the seniors bid a formal adieu to their alma mater on this day. Aptly named, this is an event which has much more to do with the heart than the mind, 'Sahrudaya' – is a Farewell function for the seniors.

'Samskruti' : Every member who is associated with the Siva Sivani Institutions becomes a member of the Siva Sivani family for life, irrespective of the physical presence on the campus. A platform for the former and the present students to come together, share their experiences and keep the bonding intact, 'Sadhana' the alumni meet of SSDC is held with a lot of fervor with students attending in festal a mood.

'Sadhana' : Facilities for games like Cricket, Volleyball, and Athletics are available for the relaxation of the mind. Arrangements are also being made for creating the requisite facilities for indoor games like Chess, Carroms, Table Tennis etc.



Mamatha
PRINCIPAL
Siva Sivani Degree College
Koppal, Madhwal, Malavalli (Dist. Koppal)



OUR LIBRARY

A library is the life blood of any good educational institution and so also it is for SSDC. The library exclusively set up for SSDC has 280 titles and 5100 volumes. This is in addition to the use of SSIM's library for reference by the faculty which has 12,123 titles, 47,451 volumes, 2,163 international journals and 61 national journals.



COMPUTER LAB

SSDC boasts of a well equipped modern computer lab, apt for imparting the required skills in this area for the respective courses. The lab has 60 P4 systems on the LAN. A host of software including Tally, Oracle etc., help to integrate and attune the systems to the needs of the students. Experienced and highly qualified lab faculty assist the students in the laboratory. Ample time is provided for the students to practice their acquired skills in this area.



Mamappa
PRINCIPAL
Siva Sivani Degree College
Kombali Marolal, Malavalli, Tumkur



**S.P. SAMPATHY'S
SIVA SIVANI GROUP OF INSTITUTIONS**

NH-7, Kompally, Secunderabad - 500 100.

Ph: 011-27165450-54

www.sivade.ac.in

SIVA SIVANI
INSTITUTE OF MANAGEMENT

SSIM'S
CENTRE FOR
INTERNATIONAL STUDIES

SIVA SIVANI
DEGREE COLLEGE

SIVA SIVANI
JUNIOR COLLEGE

SPS
HIGH SCHOOL



Mameta
PRINCIPAL
Siva Sivani Degree College
Kompally, Medchal-Malkajgiri (Dist) 500100



SIVA SIVANI DEGREE COLLEGE

Affiliated to Osmania University

NH-7, Kompally, Secunderabad - 500100.

Mobile No: 9247048112, 9849860865, 9948969521



Manoj
PRINCIPAL
Siva Sivani Degree College
Kompally, Medchal-Malkajgiri(DT)-500100